



Savoir Faire

SARTORIA^{est.} 2018

2018: Sartoria is created, combining the knowledge with the understanding of modern ceramic history. A tailored project for all those who love interior design, small sizes, colour and decoration. From these four elements a new chapter within Terratinta Group is born, aiming to create a new style that can be exported all over the world.

Just like the detailed and creative creations of a tailor, Sartoria designs and fulfils distinguished ideas, giving new life to the craftsmanship of the small ceramic size. From white-body walls to gres porcelain tiles, different options designed for small and wide spaces: a unique, contrasting design, a choice between styles, a choice of style.

Dall'esperienza di una storia ceramica recente senza precedenti, nel 2018 nasce Sartoria. Un progetto su misura per chi ama l'interior design, il piccolo formato, il colore e la decorazione. Da questi quattro elementi nasce un nuovo capitolo all'interno di Terratinta Group, con l'obiettivo di creare un nuovo stile esportabile in tutto il mondo. Così come le creazioni di un sarto, meticolose e creative, Sartoria disegna e realizza grandi idee, dando nuova vita all'artigianalità del piccolo formato ceramico. Dal rivestimento in pasta bianca al porcellanato, diverse combinazioni pensate per piccoli e grandi spazi: un design unico, contrastante, una scelta di stili e di stile.

Savoir Faire

THE CHARM OF HAND-WORKED CERAMICS

The Savoir Faire collection is a tribute to the past, blending tradition and craftsmanship to recreate the unique aesthetic of handmade tiles.

These products, inspired by the charming imperfections of hand-worked ceramics, convey an authenticity that only the human touch can provide. Each tile becomes a canvas that tells a story, highlighting the narrative power of surfaces and materials. The varied color shades offer intense and ever-changing tones, ideal for creating intimate, cozy, and authentic environments.

Savoir Faire invites you to rediscover the senses and the human imprint, celebrating the care and passion of manual work that imbues spaces with a vibrant sense of warmth, beyond trends and time.

IL FASCINO DELLA CERAMICA LAVORATA A MANO

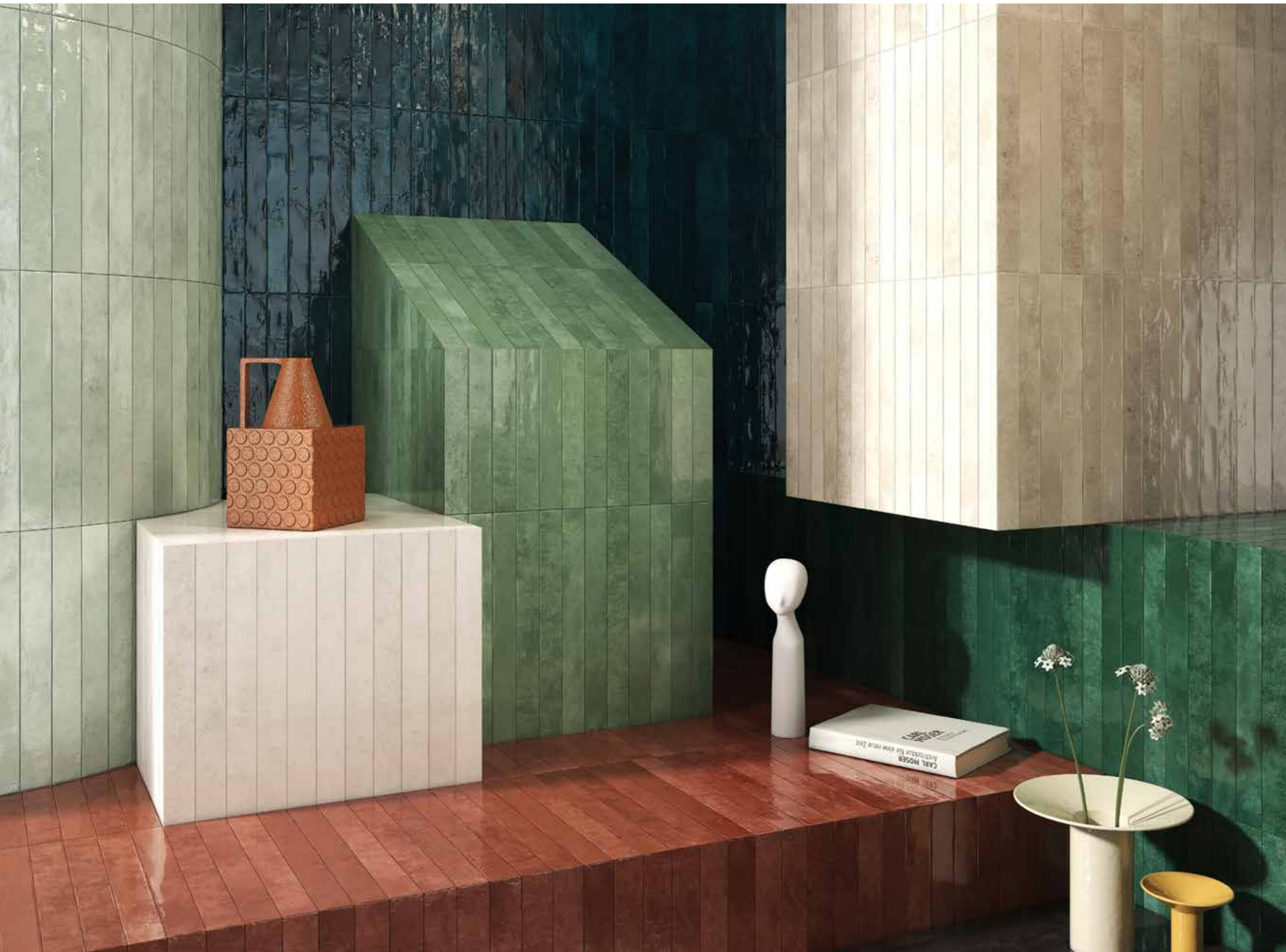
La collezione Savoir Faire è un omaggio al passato, unendo tradizione e maestria artigianale per ricreare l'estetica unica delle piastrelle fatte a mano.

Questi prodotti, ispirati dalle imperfezioni affascinanti della ceramica lavorata a mano, esprimono un'autenticità che solo il tocco umano può conferire. Ogni piastrella diventa una tela che racconta una storia, esaltando il potere narrativo delle superfici e dei materiali. Le sfumature cromatiche variegata offrono tonalità intense e mutevoli, ideali per creare ambienti intimi, accoglienti e autentici.

Savoir Faire invita a riscoprire i sensi e l'impronta dell'uomo, celebrando la cura e la passione del lavoro manuale che infonde negli spazi una vibrante sensazione di accoglienza, al di là delle mode e del tempo.



Emerald 4,8x45 cm glossy
Granito Taupe 80x80 cm
(Ceramica Magica)



Savoir Faire

10

packaging

31

technical features

32



THE ILLUSTRATOR



SAVOIR FAIRE

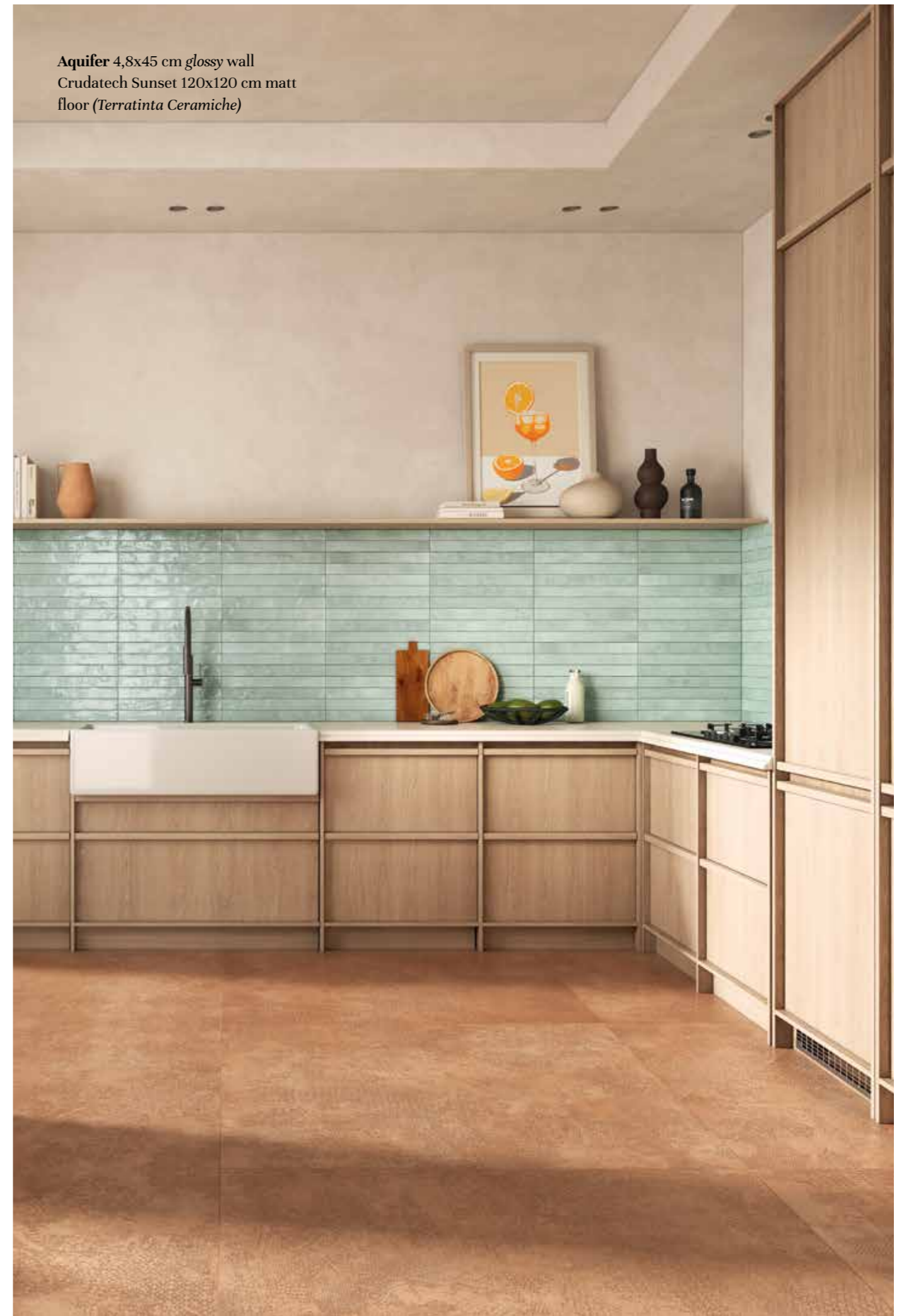
Porcelain stoneware,
walls & floors, **4,8x45 cm**.

Gres porcellanato,
rivestimento & pavimento, **4,8x45 cm**.

± 9,5 mm

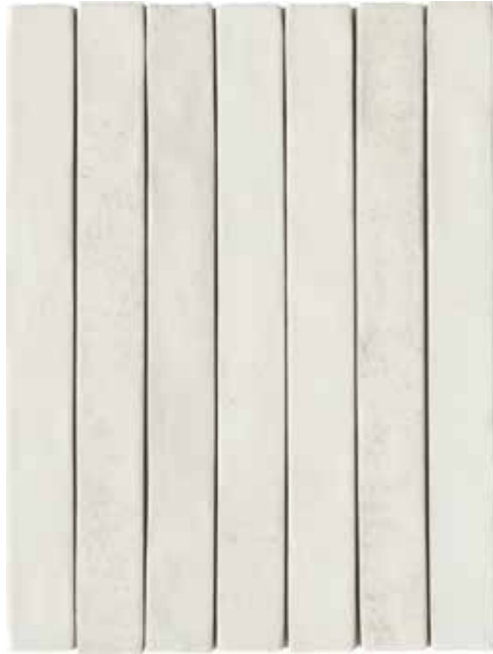
glossy

Aquifer 4,8x45 cm glossy wall
Crudatech Sunset 120x120 cm matt
floor (*Terratinta Ceramiche*)





Aquifer 4,8x45 cm glossy wall
Crudatech Sunset 120x120 cm matt floor (Terratinta Ceramiche)



Ceramic



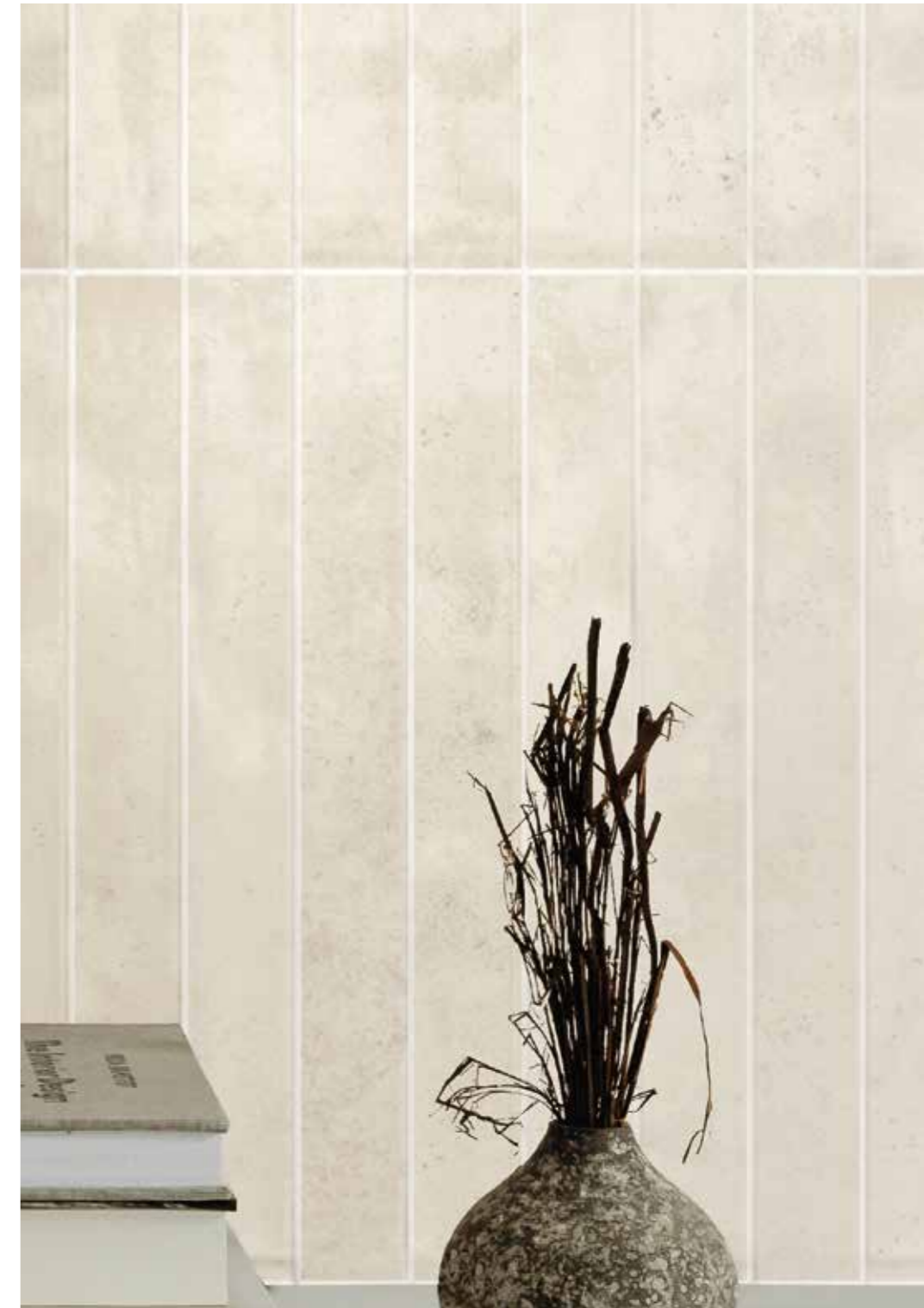
Clay

Clay 4,8x45 cm glossy



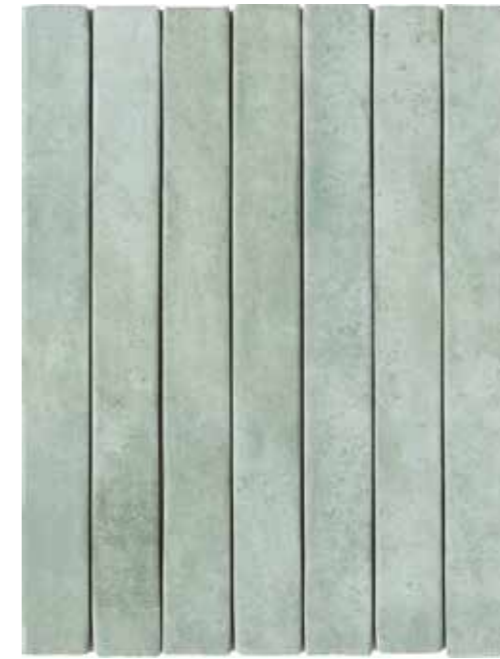


Clay 4,8x45 cm glossy





Mint 4,8x45 cm glossy wall
Crudatech Shadow 120x120 cm matt floor (Terratinta Ceramiche)



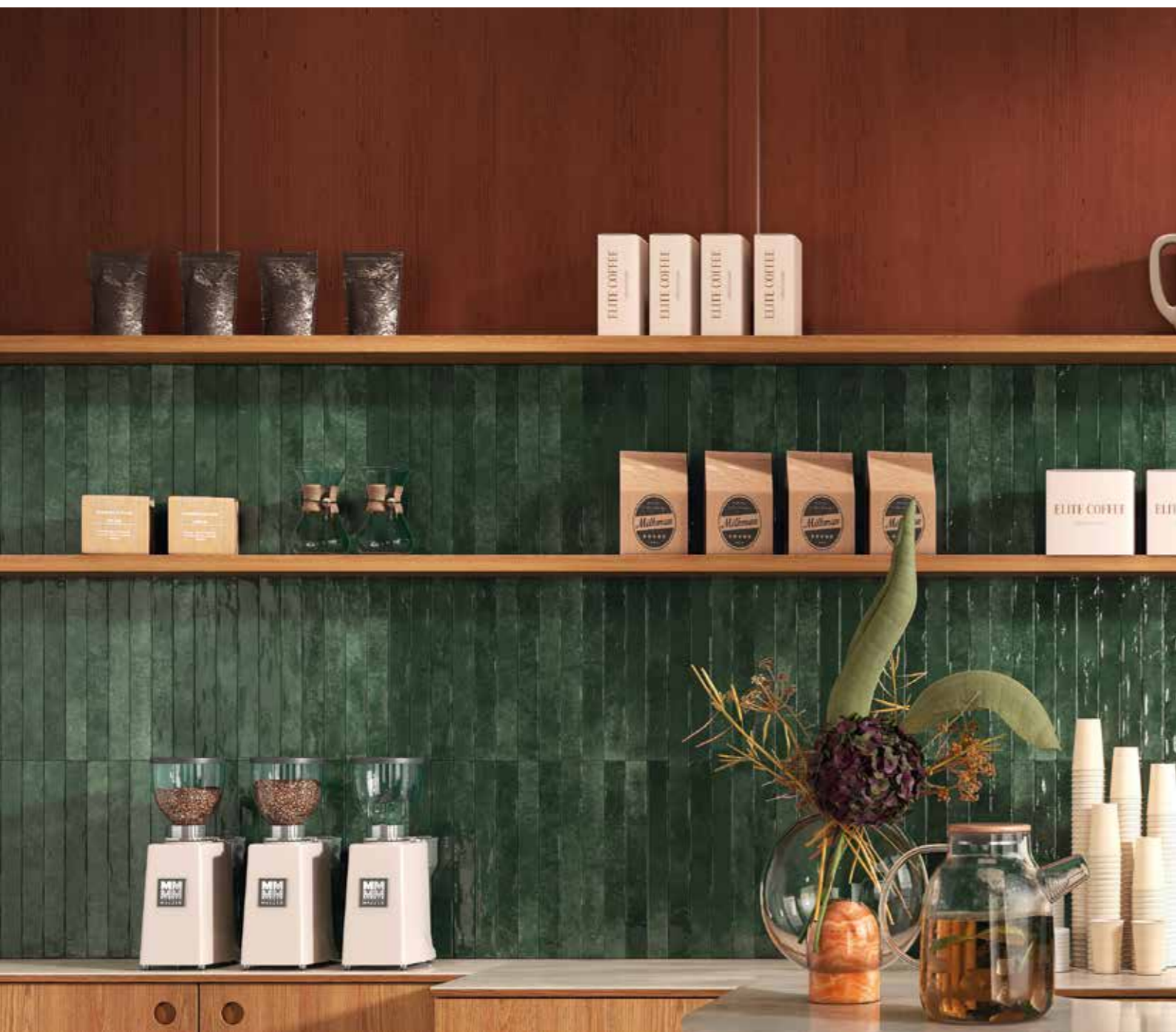
Aquifer



Mint



Lagoon 4,8x45 cm glossy wall
Crudatech Shadow 120x120 cm matt floor (*Terratinta Ceramiche*)



Emerald 4,8x45 cm glossy wall
 Granito Taupe 80x80 cm matt floor (Ceramica Magica)



Espresso	2.5
Long Black	2
Coltado	4
Cappuccino	3
Flat white	3.5
Latte	4

Chai Latte	5
Matcha Latte	5
Iced Black	2.5
Iced Latte	3



Emerald



Lagoon



Lagoon 4,8x45 cm glossy wall



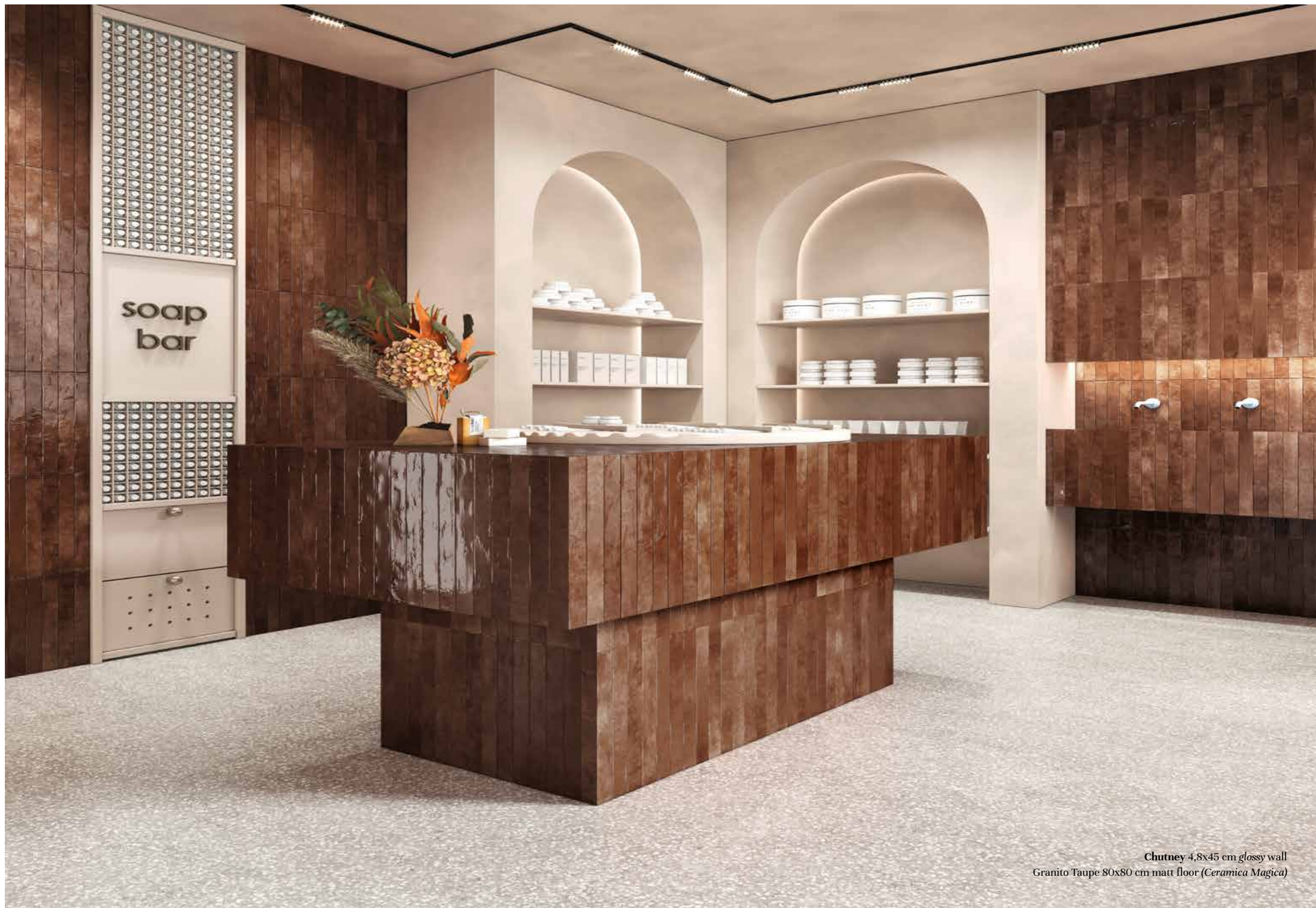
Smoke 4,8x45 cm *glossy wall*
Ceramic 4,8x45 cm *glossy floor*



Chutney



Smoke

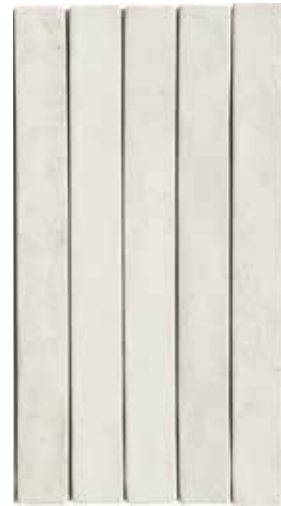


Chutney 4,8x45 cm glossy wall
Granito Taupe 80x80 cm matt floor (Ceramica Magica)

SAVOIR FAIRE SUMMARY

4,8x45 cm - 2"x18" walls and floors | *pavimenti e rivestimenti*
glossy

± 9,5 mm



Ceramic



Clay



Aquifer



Mint



Emerald



Lagoon




Chutney



Smoke

SAVOIR FAIRE PACKAGING | IMBALLI

	BOX SCATOLA			PALLET		
	PCS PZ	SQ.MT. MQ	KG	BOXES SCATOLE	SQ.MT. MQ	KG
 4,8x45 cm glossy 2"x18"	32	0,69	13,50	66	45,54	911

SAVOIR FAIRE

TECHNICAL FEATURES | CARATTERISTICHE TECNICHE











TECHNICAL FEATURES GLAZED PORCELAIN STONEWARE

CONFORMING TO EUROPEAN STANDARDS EN 14411 ISO 13006 APP. G (GROUP BIA GL EB ≤ 0,5%)

CARATTERISTICHE TECNICHE GRÈS PORCELLANATO SMALTATO Conformi a Norme Europee EN 14411 ISO 13006 App. G (Gruppo BIA GL Eb ≤ 0,5%)

TECHNISCHE EIGENSCHAFTEN GLASIERTES FEINSTEINZEUG Gemäß den Europäischen Normen EN 14411 ISO 13006 App. G (Gruppe BIA GL Eb ≤ 0,5%)

CARACTÉRISTIQUES TECHNIQUES GRÈS CÉRAME ÉMAILLÉ Conformes aux Normes Européennes EN 14411 ISO 13006 App. G (Groupe BIA GL Eb ≤ 0,5%)

TECHNICAL FEATURES CARATTERISTICHE TECNICHE TECHNISCHE DATEN CARACTÉRISTIQUES TECHNIQUES	TESTING METHOD METODO DI PROVA PRÜFVERFAHREN NORME D'ESSAIS	REFERENCE STANDARD RIFERIMENTO NORMA STANDARDWERT RÉFÉRENCE NORME	TEST RESULTS VALORE PRODOTTO PRODUKT WERTE RÉSULTATS DE L'ESSAI	
 <p>Sizes Dimensioni Abmessungen Dimensions</p>	EN ISO 10545-2	<p>• Length and width - Lunghezza e larghezza Länge und Breite - Longueur et largeur</p>	<p>7cm≤N<15cm N ≥ 15 cm</p> <p>±0,9mm ±0,6% ±2,0mm</p>	
		<p>• Thickness - Spessore - Stärke - Épaisseur</p>	<p>±0,5mm ±5,0% ±0,5mm</p>	
		<p>• Linearity - Rettilinearità spigoli - Kanten geradheit - Rectitude des arêtes</p>	<p>±0,75mm ±0,5% ±1,5mm</p>	
		<p>• Wedging - Ortogonalità - Rechtwinkligkeit Orthogonalité</p>	<p>±0,75mm ±0,5% ±2,0mm</p>	
		<p>• Warpage - Planarità - Ebeflächigkeit Planéité</p>	<p>±0,75mm ±0,5% ±2,0mm</p>	
		<p>• Appearance: percentage of acceptable tiles, per lot - Aspetto: percentuale di piastrelle accettabili nel lotto - Oberflächenbeschaffenheit: Prozentsatz der Fliesen, die den geforderten Eigenschaften entsprechen - Aspect: pourcentage de carreaux acceptables sur la fourniture totale</p>	<p>95% min.</p>	
 <p>Water absorption Assorbimento acqua Wasseraufnahme Absorption d'eau</p>	EN ISO 10545-3	El _b < 0,5%	Compliant Conforme Erfüllt - Conforme	
 <p>Modulus of rupture Resistenza alla flessione Biegefestigkeit Résistance à la flexion</p>	EN ISO 10545-4	Min. 35N/mm ²	Compliant Conforme Erfüllt - Conforme	
 <p>Abrasion resistance Resistenza all'abrasione Abriebbeständigkeit Résistance à l'abrasion</p>	EN ISO 10545-7	CLASS 0-5	From 4 to 5 Da 4 a 5 - Von 4 bis 5 De 4 jusqu'à 5	
 <p>Thermal expansion coefficient Coefficiente di dilatazione termica lineare Wärmeausdehnung Coefficient de dilatation thermique linéaire</p>	EN ISO 10545-8	Declared value Valore dichiarato Angegebener Wert Valeur déclaré	≤ 9 MK-1	
 <p>Thermal shock resistance Resistenza agli sbalzi termici Temperaturwechselbeständigkeit Résistance aux écarts de température</p>	EN ISO 10545-9	Pass according to ISO 10545-1 Test superato in accordo con ISO 10545-1 Test überstanden nach ISO 10545-1 Pv en accord avec norme en 10545-1	Resistant Resistente Widerstandsfähig Résistant	
 <p>Glaze crazing resistance Determinazione della resistenza al cavillo Glasurehaarrißbeständigkeit Résistance aux taches</p>	EN ISO 10545-11	Required Richiesta Gefordert Requise	Resistant Resistente Widerstandsfähig Résistant	
 <p>Frost resistance Resistenza al gelo Frostbeständigkeit Résistance au gel</p>	EN ISO 10545-12	Pass according to ISO 10545-1 Test superato in accordo con ISO 10545-1 Test überstanden nach ISO 10545-1 Pv en accord avec norme en 10545-1	Resistant Resistente Widerstandsfähig Résistant	
	EN ISO 10545-13	Resistance to low concentrations of acids and alkali Resistenza a basse concentrazioni di acidi e alcali Beständigkeit gegen schwach konzentrierten Säuren und Laugen Résistance à des basses concentrations d'acides et bases	Declared value Valore dichiarato Angegebener Wert Valeur déclaré	From GLA to GLB Da GLA a GLB Von GLA bis GLB De GLA jusqu'à GLB
		Resistance to high concentrations of acids and alkali Resistenza ad alte concentrazioni di acidi e alcali Beständigkeit gegen stark konzentrierten Säuren und Laugen Résistance à des hautes concentrations d'acides et bases	Declared value Valore dichiarato Angegebener Wert Valeur déclaré	From GHA to GHB Da GHA a GHB Von GHA bis GHB De GHA jusqu'à GHB
		Resistance to domestic chemicals and additives for swimming pools Resistenza ai prodotti chimici di uso domestico e agli additivi per piscina Beständigkeit gegen chemischen Haushaltsreiniger und Zusatzstoffe für Schwimmbäder Résistance aux prod. chimiques d'usage domestique et additifs pour piscines	GB min.	GA
 <p>Stain resistance of glazed porcelain Resistenza alle macchie di piastrelle smaltate Fleckenbeständigkeit von glasierten Fliesen Résistance aux taches des carreaux émaillés</p>	EN ISO 10545-14	Class 3 min Classe 3 min Gruppe 3 min. Classe 3 min	CLASS 5	



V3 HIGH